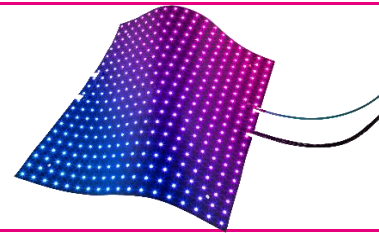


## ledTec.flex | wallpaper | p32 | 2500lm | ip20

preliminary

The ledTec.flex | display | p32 is a thin, flexible LED display with 20 x 18 pixels (640 x 576mm) and a 32.0mm pixel pitch. The foil has a brightness of 2500 lumens per sqm and is suitable for indoor wall and ceiling applications with high lumen output with best performance on electronic design and light weight requirements. Multiple modules can be cascaded to realize large screens.



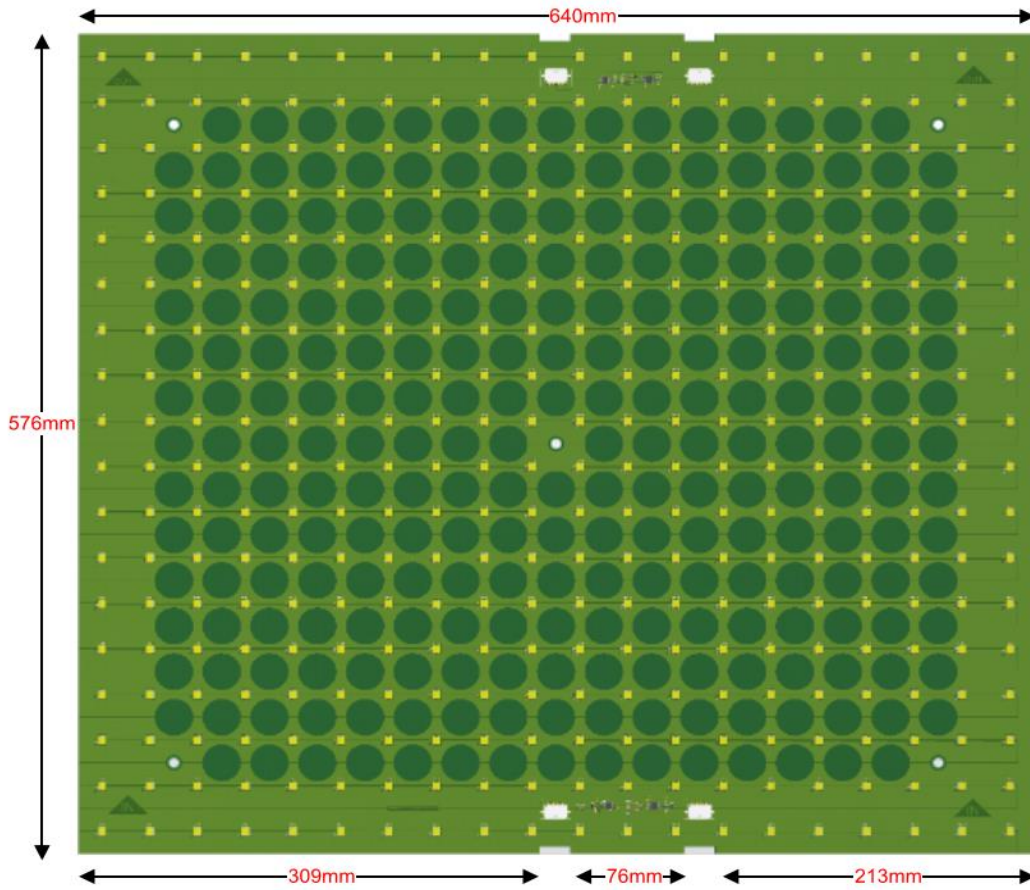
LED Pitch	32mm
Light Source (LEDs)	360 pixels per foil / 977 pixels per sqm. RGB SMD LED, individually controllable
Luminous flux	2500lm/sqm
Color point white (k)	9000K
Surface	Polyimide (PI)
Pixel per Tile	20(horizontal) x 18(vertical)
DimensionsLxWxH	640mm x 576mm x 6mm (connector height)
Color of the surface	deep black
LED colors	RGB
Colour resolution	16.7 Million colors / 8bit per color
LED PWM frequency	6.9 kHz
Frame rate	max 60Hz
Beam Angle	120°
Ambient temperature during operation	min 0°C / max 50°C
Storage temperature	min -20°C / max 80°C
Lumen maintenance	L50 @ 25°C -50.000hrs
Bending radius all directions	800mm
Mounting	Velcro. Optional additional safety via mounting holes in corners and in center
Cable interface	Molex Microfit. 4-pin for data, 6-pin for power
Weight	270g per foil
Environment	indoor IP20
Humidity	0-90%, non-condensing
Approbation	CE, RoHS, REACH

### Electrical Specifications

Operating voltage	12V
Power Consumption (typical)	20W per foil
Power Consumption (max)	40W per foil

### System Specifications

Power Supply	AC110V/230V-100 up to 600W/12V
Control	ArtNet
Converter	ledTec.flex   converter   advanced   v1.0
Configuration	via web interface of converter



## ledTec.flex | wallpaper | p32 | 2500lm | ip20

Mounting (dimensions in mm)

The ledTec.flex | display | p32 is a thin, flexible LED display with 20 x 18 pixels (640 x 576mm) and a 32.0mm pixel  
Velcro Mounting



## ledTec.flex | wallpaper | rgb | p32 | 2500ln | ip20

## Ordering

The ledTec.flex | display | p32 is a thin, flexible LED display with 20 x 18 pixels (640 x 576mm) and a 32.0mm pixel pitch. The foil has a brightness of 2500 lumen

### Fixtures

Item Code	Description	Data
V10 0019	ledTec.flex   display   p5   3000   black   ip65	3000 NIT / pixel pitch 5mm, IP65
V10 0084	ledTec.flex   display   p10   7000   deep black   ip65	7000 NIT / pixel pitch 10mm, IP65
V10 0085	ledTec.flex   banner   p16   4000   deep black   ip66	4000 NIT / pixel pitch 16mm, IP66
V10 0086	ledTec.flex   banner   p16   6000   deep black   ip66	6000 NIT / pixel pitch 16mm, IP66
V10 0233	ledTec.flex   wallpaper   p32   2500   v1.0   ip20   black	2500 NIT / pixel pitch 32mm, IP20

### Mouting Accessories

V10 0218	ledTec.flex   velcro   wallpaper   black   soft & hook per Unit	2,5m length x 25mm width
V10 0219	ledTec.flex   velcro   wallpaper   white   soft & hook per Unit	2,5m length x 25mm width
V10 0017	ledTec.flex   velcro   display   black   soft & hook per Unit	3,5m length x 25mm width
R10 0018	ledTec.flex   velcro   black   soft   roll   25m	25m length x 25mm width
R10 0019	ledTec.flex   velcro   white   soft   roll   25m	25m length x 25mm width
R10 0050	ledTec.flex   velcro   black   hook   roll   25m	25m length x 25mm width
R10 0051	ledTec.flex   velcro   white   hook   roll   25m	25m length x 25mm width

### Cables & Connector

V100250	ledTec.flex   cable   f2f   mf   4pin   48.5mm	P32
V100251	ledTec.flex   cable   f2f   mf   6pin   48.5mm	P32
V100252	ledTec.flex   cable   starter2f   mf-rj45   4pin   0.3m	P32
V100253	ledTec.flex   cable   starter2f   mf   6pin   12m	P32
V100254	ledTec.flex   cable   starter2f   mf   6pin   7m	P32
R10 0025	ledTec.flex   data cable   CAT5e   5m	Rj45
R10 0026	ledTec.flex   data cable   CAT5e   10m	Rj45
R10 0027	ledTec.flex   data cable   CAT5e   20m	Rj45

### Power Supply

V100240	ledTec.flex   power supply   500W/5V	IP20
V100241	ledTec.flex   power supply   100W/24V	IP65
V100242	ledTec.flex   power supply   240W/24V	IP65
V100243	ledTec.flex   power supply   480W/24V	IP65
V100244	ledTec.flex   power supply   AC 480W/24V   din rail	IP20
	ledTec.flex   power supply   AC 600W/12V (480)	IP66

### Converter - Controller

V10 0216	ledTec.flex   controller   display	Player with 1 HDMI mini out (Terminal), video out: Wifi
V10 0217	ledTec.flex   controller   display   software   lizence 12 mounts	Software
V10 0213	ledTec.flex   converter   advanced   v1.0	ARTNet in / LPIX2 out