

motionTec.sens sensor

INTERACTIVE ANALYTICS POINT

Built for Any Environment: Certified for the indoors and outdoors.

Flexible Connectivity: WiFi, Ethernet, LTE connectivity options make life easy for IT teams.

Plug & Play: Over 100 sensors can be installed in less than a day. No cabling or extra servers required.

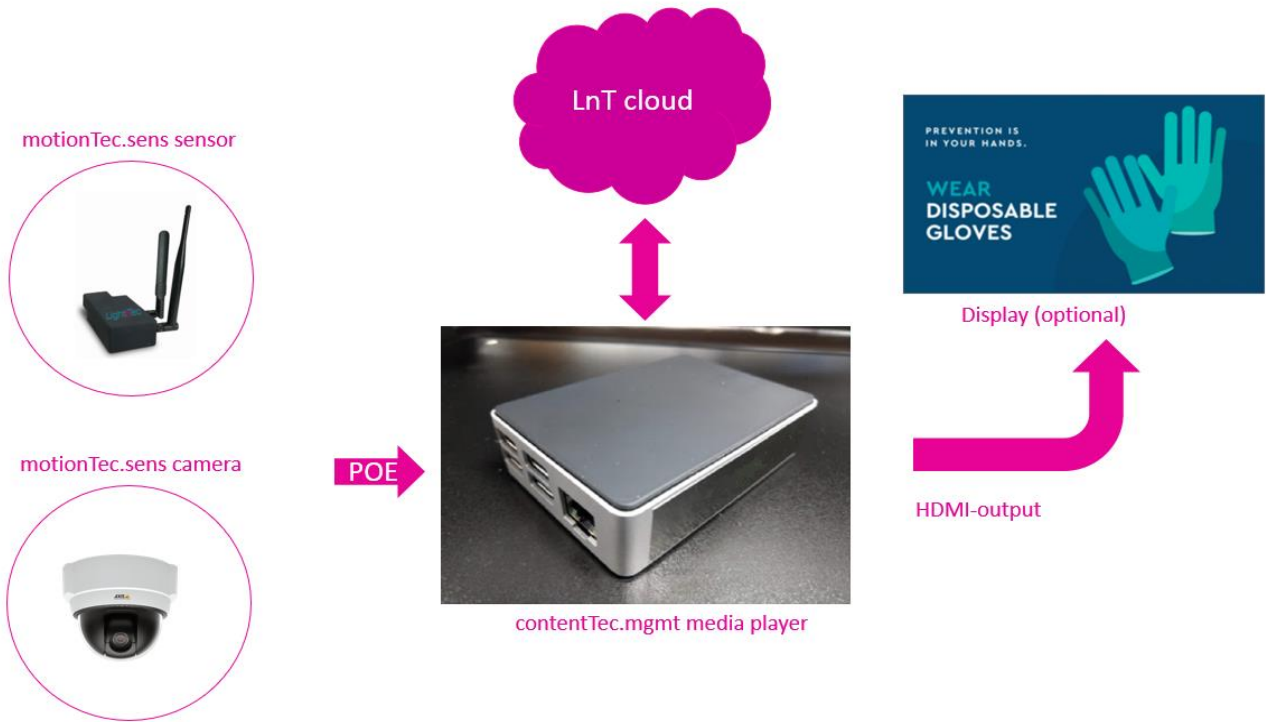
Privacy by Design: Sensor never stores personal information and commits to yearly internal audits to maintain

DSGVO compliance



| | |
|------------------------------------|--|
| General | Data collection from peripherals and sensors Data transmission from processing unit to cloud back-end |
| Network connectivity | Wi-Fi & Bluetooth Sensing |
| Internet Network Connection | Ethernet RJ45, 802.11.b/g/n/ac Wi-Fi, Optional LTE |
| Operating Temperature | 0°C up to 30°C |
| Storage Temperature | -10°C up to 60°C |
| Weight | 183g |
| Dimensions LxWxH | L: 130mm x W: 65mm x H: 40mm |
| Mounting | Velcro or screws |
| Approbation | CE, UL, RoHS, Reach, FCC |
| Environment | IP20, indoor |
| Humidity | 0-90%, non-condensing |
| Antennas | Dipole rubber duck omni for Wi-Fi (standard) for Wi-Fi (standard) with RPSMA connector Optional Antennas for specic Wi-Fi patterns with RPSMA connection are possible, depending on installation layout |
| Certification | Certication for any directional antenna (with RPSMA connector) can beprovided within the scope of deployment and for antenna types recommended by Wi-Fi supplier. Recommended directional patch antenna AccelTex (type ATS-OP-245-47-3RPSP-36), has a Wi-Fi directional coverage of 60m |
| Electrical Specifications | |
| Operating voltage | 5 V DC |
| Power Consumption (maximum) | 3W |
| System Specifications | |
| Power Supply | AC110V/230V -5V |

System Diagram



motionTec.sens sensor

Ordering

Sensoric, CMS & Cloud

| Ref | Item Code | Description | |
|----------|-------------|--|---|
| MoSe4 | V10 0004.00 | motionTec.sens sensor- Starter Set 4 sensors | for 250sqm, incl. PoE Switch, PSU, LTE router |
| MoExpo10 | V10 0020.00 | motionTec.sens & analytics expo license/5 sensors10 days | Rental for 250sqm, incl. PoE Switch, PSU, LTE router |
| MoCaPro | V10 0022.00 | motionTec.sens camera - Pro | Overhead Axis LAN camera |
| MoCaUSB | V10 0023.00 | motionTec.sens camera - USB | Sensor connected USB camera (HD) |
| CoCMS12 | V10 0030.00 | contentTec.mgmt CMS 12 mouths contract | 12 months per 5 Dislpay, incl. media player(1 HDMI min out) |
| CoCMS24 | V10 0029.00 | contentTec.mgmt CMS 24 mouths contract | 13 months per 5 Dislpay, incl. media player(1 HDMI min out) |
| MoAn12 | V10 0005.00 | motionTec.analytics license - Advanced 12 months contract | 12 months per 250sqm |
| MoAn12Ex | V10 0012.00 | motionTec.analytics license - Advanced extension of the 12 | next 12 months per 250sqm |
| MoAn24 | V10 0006.00 | motionTec.analytics license - Advabced 24 months contract | 12 months per 250sqm |
| MoAn24Ex | V10 0024.00 | motionTec.analytics license - Advanced extension of the 24 | next 12 months per 250sqm |
| MoDe12 | V10 0027.00 | motionTec.demografics license - Advanced 12 months contract | 12 months per 250sqm |
| MoDe12Ex | V10 0028.00 | motionTec.demografics license - Advanced extension of the 12 | next 12 months per 250sqm |
| MoDe24 | V10 0025.00 | motionTec.demografics license - Advanced 24 months contract | 12 months per 250sqm |
| MoDe24Ex | V10 0026.00 | motionTec.demografics license - Advanced extension of the 12 | next 12 months per 250sqm |